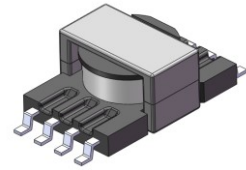
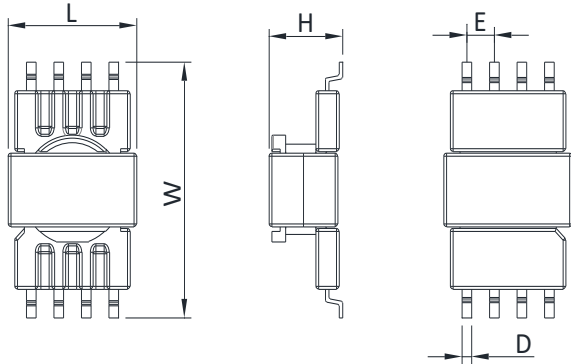


Product Outline

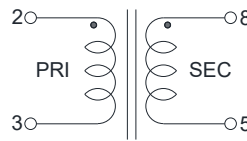
- High reliability DC/DC converter transformer.
- Ideally used in Electric compressor for Car Air-conditioner, Converter on ECU, BMS, LED head light driving, IGBT and other electronic devices.
- Operating temperature range(Including self temperature rise):-40°C to +125°C.
- Custom design is also available.
- RoHS Compliant.



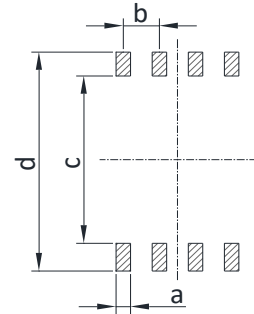
Dimensions



Schematics



Recommended Land Patterns



Unit: mm

Type	L	W	H	D	E	a	b	c	d	Packaging (pcs/reel)
TER0905	9.4±0.5	17.0±0.5	5.35±0.5	0.7	2.0	1.2	2.0	14.0	18.0	600

Dimensions without tolerance are typical.

Electrical Characteristics(at 25°C)

Part Number	Inductance(uH) 100kHz,1V	LK(nH) 100kHz,1V	DCR(mΩ)		Impulse 1000Vrms,10Pulses	Hi-Pot 50/60Hz,1mA,2S	
	PRI	PRI(Short others)	PRI	SEC	SEC	PRI-SEC	COIL-CORE
TER0905-A001	2.0±10%	100 Max.	35 Max.	200 Max.	15% Area Max.	AC 3600V	AC 3000V