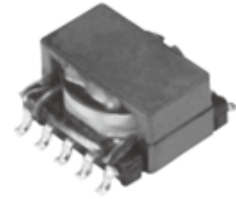
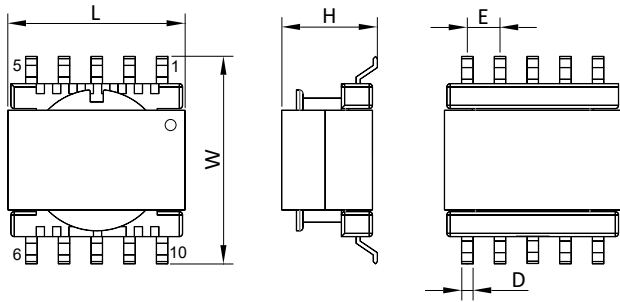


### Product Outline

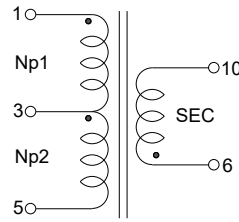
- High reliability DC/DC converter transformer.
- Ideally used in Electric compressor for Car Air-conditioner, Converter on ECU, BMS, LED head light driving, IGBT and other electronic devices.
- Operating temperature range(Including self temperature rise):-40°C to +125°C.
- Custom design is also available.
- RoHS Compliant.



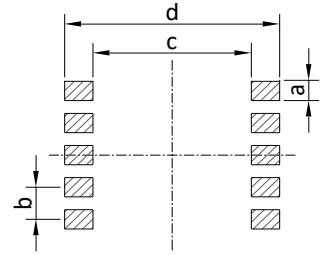
### Dimensions



### Schematics



### Recommended Land Patterns



Unit: mm

Type	L	W	H	D	E	a	b	c	d	Packaging (pcs/reel)
TER1206	11.5 Max.	12.7 Max.	6.5 Max.	0.7	2.0	1.2	2.0	9.5	12.9	500

Dimensions without tolerance are typical.

### Electrical Characteristics(at 25°C)

Part Number	Inductance(uH) 100kHz,0.1V	DCR(mΩ)		Turns Ratio	Impulse 1000Vrms,5Pulses	Hi-Pot 50/60Hz,1mA,2S	
	PRI	PRI	SEC	Np1:Np2:SEC	PRI	PRI-SEC	COIL-CORE
TER1206-A001	40 Min.	160 Max.	300 Max.	1:1:3.75	10% Area Max.	AC 1800V	AC 600V