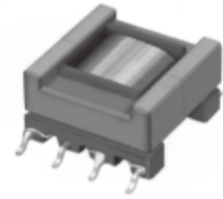
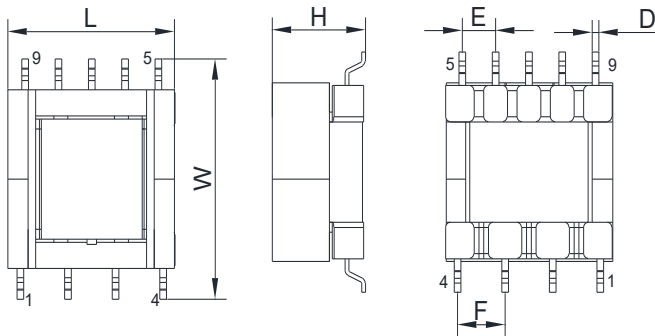


### Product Outline

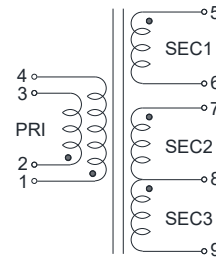
- High reliability DC/DC converter transformer.
- Ideally used in Electric compressor for Car Air-conditioner, Converter on ECU, BMS, LED head light driving, IGBT and other electronic devices.
- Operating temperature range(Including self temperature rise):-40°C to +125°C.
- Custom design is also available.
- RoHS Compliant.



### Dimensions

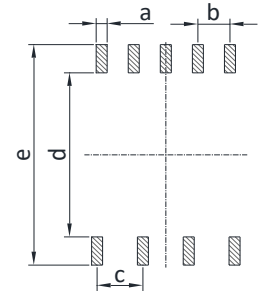


### Schematics



Pin(1+2) and (3+4) should be connected together when using on PCB

### Recommended Land Patterns



Unit: mm

Type	L	W	H	D	E	F	a	b	c	d	e	Packaging (pcs/reel)
TEPC1711	19.0 Max.	23.0±1.0	11.8 Max.	0.7	3.5	5.0	1.1	3.5	5.0	18.0	26.0	150

Dimensions without tolerance are typical.

### Electrical Characteristics(at 25°C)

Part Number	Inductance(uH) 100kHz,1V	LK(uH) 100kHz,1V	DCR(mΩ)	Turns Ratio	Hi-Pot 1mA,2S	
	PRI	PRI (Short others)	PRI	PRI:SEC1:SEC2:SEC3	PRI-SEC1,SEC2,SEC	COIL-CORE
TEPC1711-A001	18±10%	0.6 Max.	100 Max.	2:1:2.889:2.889	DC 1000V	DC 1000V