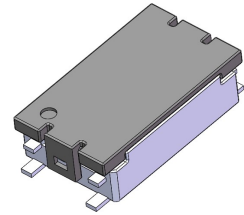
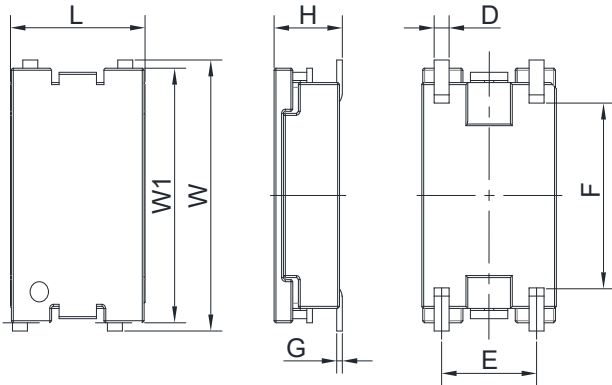


Product Outline

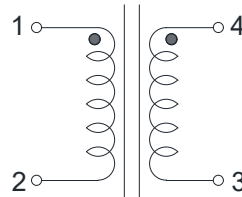
- For BMS low voltage(less than 100V of working voltage).
- Low profile, toroidal product.
- Operating temperature range(Including self temperature rise):-40°C to +125°C.
- Custom design is also available.
- RoHS Compliant.



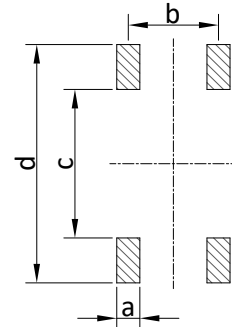
Dimensions(Unit: mm)



Schematics



Recommended Land Patterns



Unit: mm

Type	L	W	W1	H	D	E	F	a	b	c	d	Packaging (pcs/reel)
TMC0804	7.5 Max.	13.2±0.5	12.4	4.0 Max.	0.8	5.08	9.0	1.4	5.08	8.6	13.8	200

Dimensions without tolerance are typical.

Electrical Characteristics(at 25°C)

Part Number	Inductance(uH) 100kHz,1V	DCR(Ω)		Turns Ratio	Hi-Pot 50/60Hz,0.5mA,60S
	(1-2)	(1-2)	(4-3)	(1-2):(4-3)	(1-2)-(3-4)
TMC0804-001A	350 Min.	0.5 Max.	0.5 Max.	1:1±2%	AC 3000V