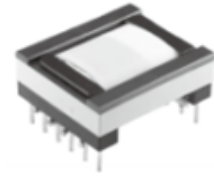
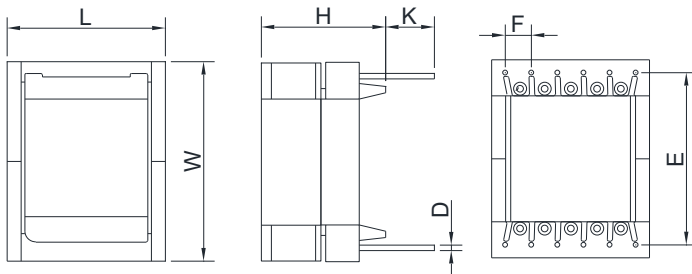


## Product Outline

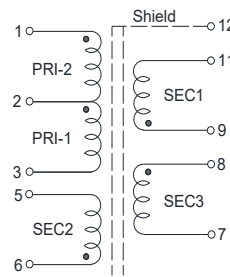
- High reliability DC/DC converter transformer.
- Ideally used in Electric compressor for Car Air-conditioner, Converter on ECU, BMS, LED head light driving, IGBT and other electronic devices.
- Operating temperature range(Including self temperature rise):-40°C to +125°C.
- Custom design is also available.
- RoHS Compliant.



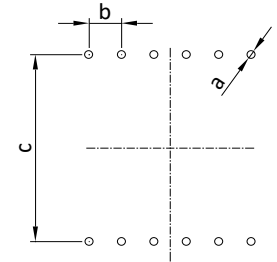
## Dimensions



## Schematics



## Recommended Land Patterns



Unit: mm

Type	L	W	H	D	E	F	K	a	b	c	Packaging (pcs/box)
DEPC3018	32.0 Max.	37.0 Max.	19.0 Max.	ø1.0	30.0	5.0	4.5	ø1.5	5.0	30.0	50

Dimensions without tolerance are typical.

## Electrical Characteristics(at 25°C)

Part Number	Inductance(uH) 100kHz,1V	LK(uH) 100kHz,1V	Turns Ratio	Hi-Pot 50/60Hz,1mA,60S		
	PRI	PRI (Short others)		PRI-1:PRI-2:SEC1:SEC2:SEC3	PRI,SEC2-SEC1,SEC3	PRI-SEC2
DEPC3018-A001	580±12%	16.0 Max.	4:4:1:1:1	AC 2500V	AC 1500V	AC 1500V