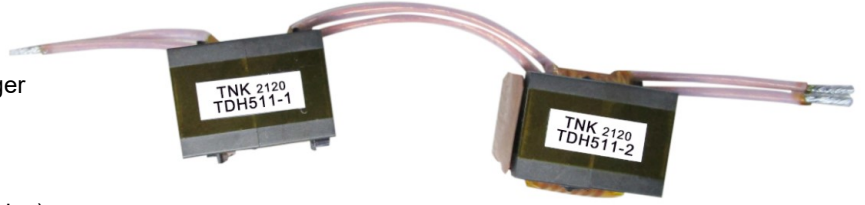
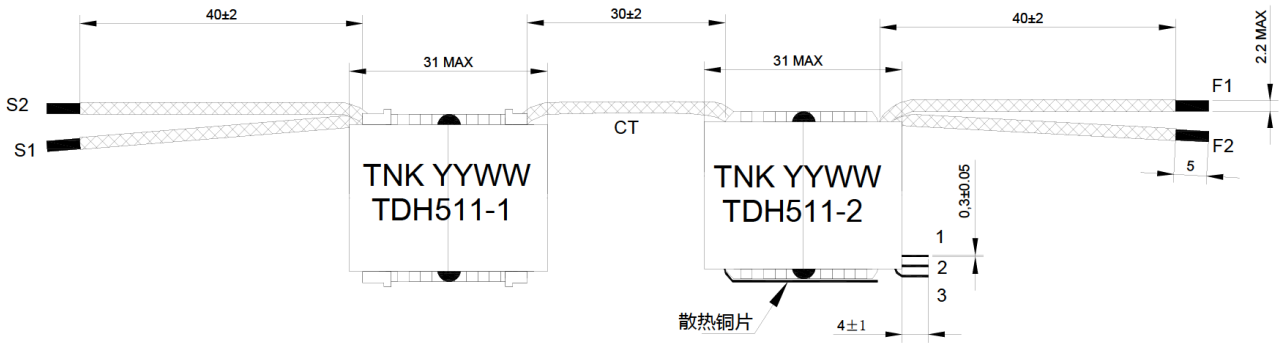


Product Outline

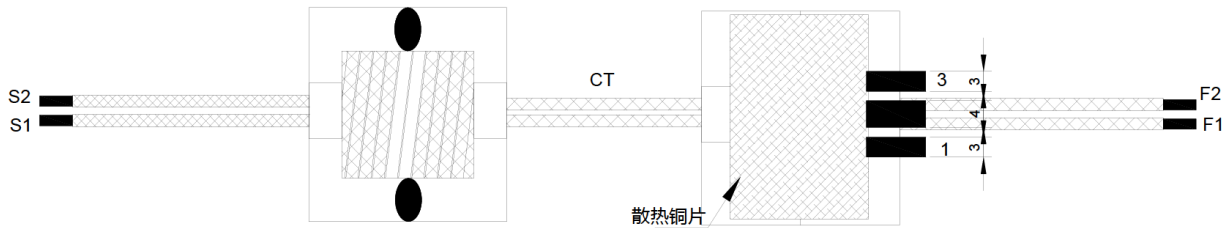
- Ideally used in Automotive On-board Charger as DC/DC converter modules.
- Operating temperature range: -25°C to +85°C(Including self temperature rise).
- Custom design is also available
- RoHS Compliant.



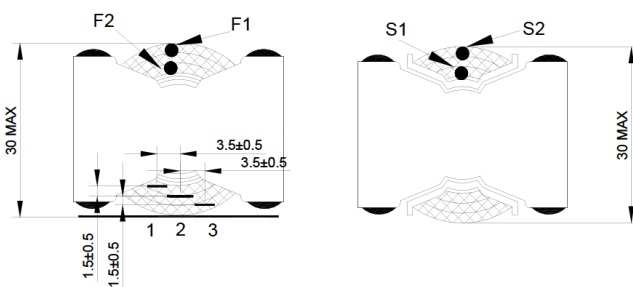
Dimensions (Unit: mm)



SIDE VIEW



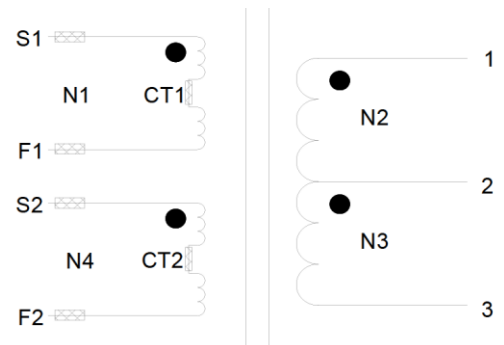
BOTTOM VIEW



BACK VIEW

FRONT VIEW

Schematics



Electrical Characteristics(at 25°C)

Part Number	OCL(uH) 10kHz, 1V	Turn Ratio	DCR(mΩ)	HI-POT 3mA,3S
	(S1-F1),(S2-F2)	(S1-F1):(S2-F2):(1-3)	(S1-F1),(S2-F2)	(S1-F1)-(S2-F2)
TDH511	32.8±10%	19:19:2	35 Max.	AC 3500V

Customized Product