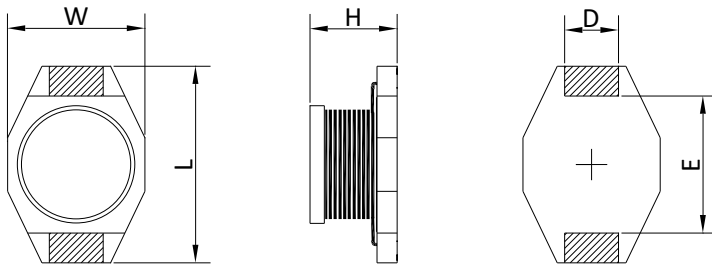


Product Outline

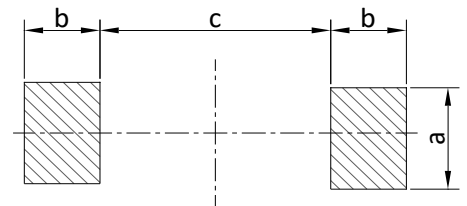
- Excellent saturation current handling to be up to 9.0A.
- Low DC resistance keeps power losses to a minimum.
- For DC/DC converter applications.
- Ideally used in thin-screen TV, LCDs, AV equipment and other electronic devices. as DC-DC converter inductors.
- Custom design is also available.



Dimensions



Recommended Land Patterns



Unit: mm

Type	L	W	H	D	E	a	b	c	Packaging (pcs/reel)
CDB1205	12.95 Max.	9.4 Max.	5.2 Max.	2.54	7.62	2.8	3.0	7.3	1000

Dimensions without tolerance are typical.

Product Identification

CDB 1205 - 4R7 M
 (1) (2) (3) (4)

(1) Product Series No.

(2) Dimension Symbol:

1205=12.95 x 5.2mm (L x H)

(3) Inductance Value:

100=10×10⁰uH=10uH 4R7=4.7uH

(4) Tolerance:

K=±10% L=±15% M=±20% P=±25% N=±30%

Electrical Characteristics(at 25°C)

Part Number	Inductance ① (uH)	Inductance tolerance	DCR ② (mΩ) Max.	Isat ③ (A)	Irms ④ (A)
CDB1205-1R0M	1.0	±20%	9.00	9.00	6.80
CDB1205-1R5M	1.5	±20%	10.0	8.00	6.40
CDB1205-2R2M	2.2	±20%	11.9	7.00	6.10
CDB1205-3R3M	3.3	±20%	15.0	6.40	5.40
CDB1205-4R7M	4.7	±20%	17.8	5.40	4.80
CDB1205-6R8M	6.8	±20%	26.8	4.60	4.40
CDB1205-100M	10	±20%	37.5	3.80	3.88
CDB1205-150M	15	±20%	45.8	3.00	3.06
CDB1205-220M	22	±20%	84.7	2.30	2.35
CDB1205-330M	33	±20%	99.5	2.00	2.04
CDB1205-470M	47	±20%	140	1.60	1.63
CDB1205-680M	68	±20%	195	1.40	1.43
CDB1205-101M	100	±20%	274	1.20	1.22
CDB1205-151M	150	±20%	398	1.00	1.00
CDB1205-221M	220	±20%	608	0.80	0.80
CDB1205-331M	330	±20%	1015	0.60	0.60
CDB1205-471M	470	±20%	1265	0.50	0.50
CDB1205-681M	680	±20%	2015	0.40	0.40
CDB1205-102M	1000	±20%	2995	0.30	0.30
CDB1205-152M	1500	±20%	4490	0.29	0.27
CDB1205-332M	3300	±20%	8968	0.19	0.17

Note:

- ① Inductance tested at 100kHz,0.1V using an Agilent/HP 4192A or equivalent.
- ② DCR measured on a micro-ohmmeter.
- ③ Isat: The DC current at which the inductance decreases by 10% of its initial value.
- ④ Irms: The DC current at which temperature rise is $\Delta T=40^{\circ}\text{C}(T_a=25^{\circ}\text{C})$.